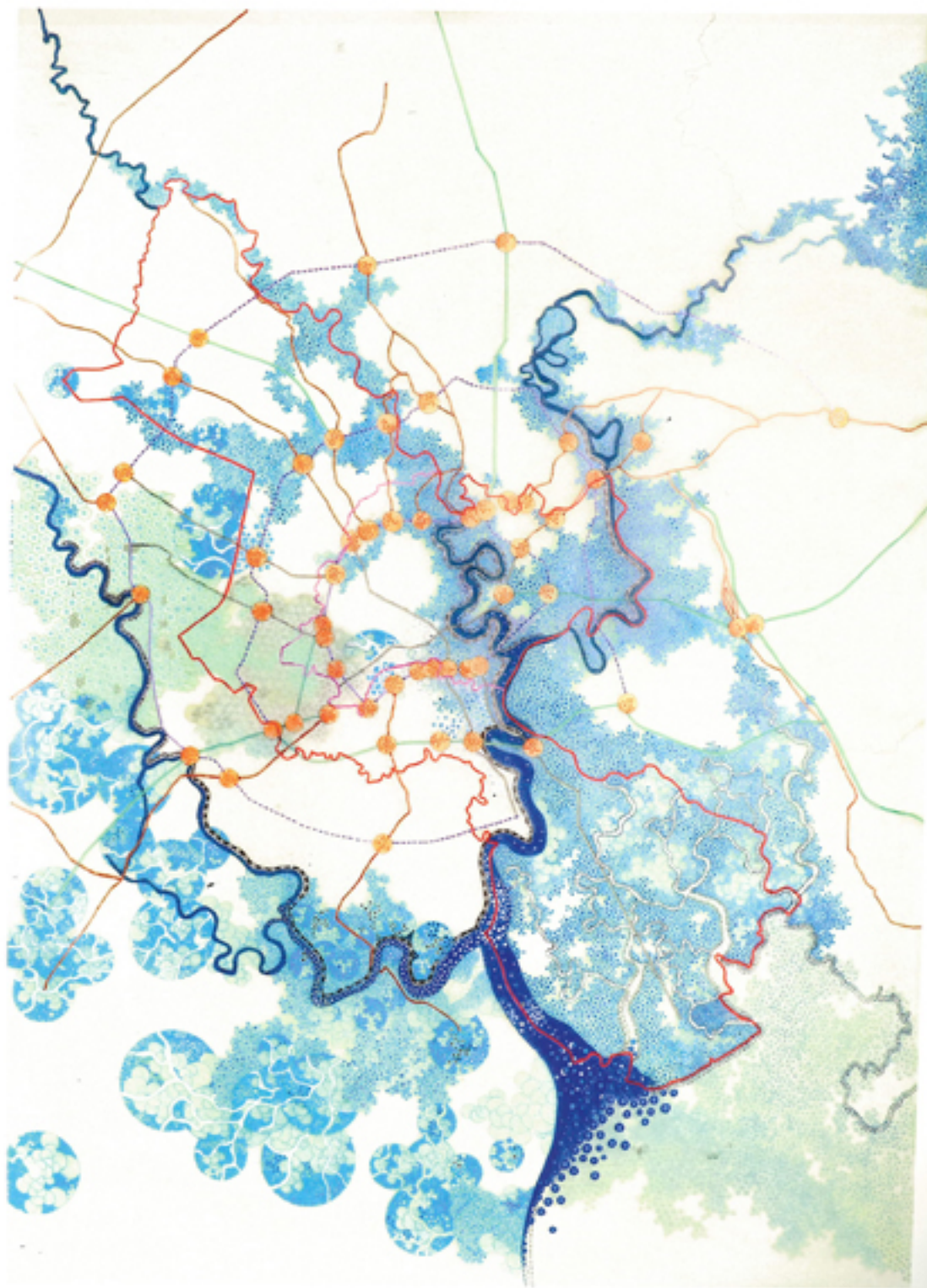


WATER URBANISMS EAST



one great giant flood 2050

The greater Ho Chi Minh City (HCMC) metropolitan area and its water network under the potential consequences of climate change is powerfully depicted by Vietnamese artist Tiffany Chung. The south of Vietnam is predicted to be one of the areas more effected by climate change and floods will come from both the East Sea and the Mekong River system to the southwest. As Vietnam's economic capital, HCMC's industrial zones, anchored to the ring road system, will also be threatened. The cartographic drawing from 2010 is micro-pigment ink, oil and alcohol-based marker on vellum and paper (110 x 70 cm).





Explorations and Speculations

